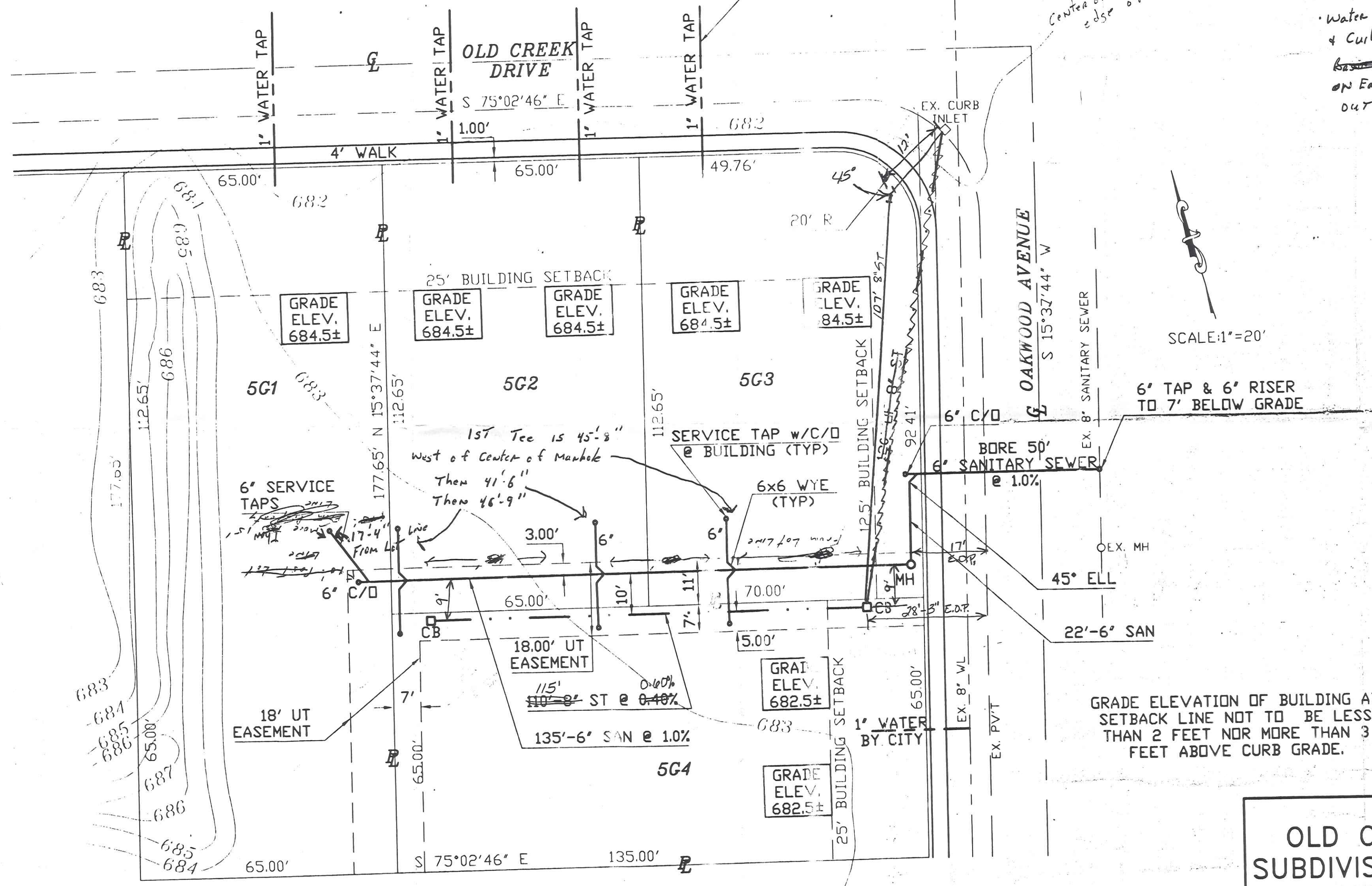


OLD CREEK SQUARE A SUBDIVISION OF LOT 5G SITE PLAN

BY CITY OF NAPOLEON



Electric + Gas is OK for
Storm Sewer at Curb + Whole Distance

Can Be 43" Dia. at
15" Basin with 4" Fall
on Tile

Cut Hole 41" from
Top of Basin or 3"
from floor of Basin to
Bottom of hole

Cut Hole in 2nd Basin
7" from Floor Bottom
up To Bottom of hole

Water Main is between Sidewalk
& Curb, may be in way of catch
Basin. Water main is
on East side of Catch Basin
out of way.

There should be no
utilities in way of
Storm Sewer.

187 Old
Creek

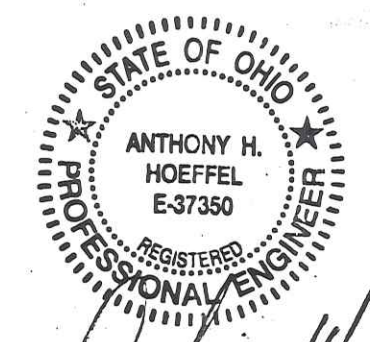
Stone 13 Top
57-

Keith
Cell 579-0048

SCALE: 1"=20'

6" TAP & 6" RISER
TO 7' BELOW GRADE

GRADE ELEVATION OF BUILDING AT
SETBACK LINE NOT TO BE LESS
THAN 2 FEET NOR MORE THAN 3
FEET ABOVE CURB GRADE.



Anthony H. Hoeffel

OLD CREEK SQUARE SUBDIVISION OF LOT 5G

SITE PLAN

SCALE: 1"=20'	DATE: 10/01/03	DWN. BY: <i>BJM</i>	1
BRYAN ENGINEERING & SURVEYING ANTHONY H. HOFFEL 128 S. LYNN ST. BRYAN, OH 43506 1-419-636-2060			1

NOTES
ROOF DRAINS, FOUNDATION DRAINS,
& OTHER CLEAN WATER CONNECTIONS
TO THE SANITARY SEWER ARE PROHIBITED.

18' VERTICAL & 10' HORIZONTAL SEPARATION
SHALL BE MAINTAINED BETWEEN WATER LINE
& SANITARY SEWER.

*10/2/03
BJM*

*BJM
10/2/03*